

Question Bank

Class: XII

Sub: Multimedia & Web Technology (Code-067)

SECTION-1 (COMPUTER & DATABASE SYSTEMS & OTHERS)

Q1.

- (a) Shreya wants to work on database management software. Suggest her any two examples of common database management system. 1
- (b) What is field in a database? Give an example. 1
- (c) Define and identify the primary key in the following table: 2

Table: Stationary

S_No	S_Name	S_Qty	PurchaseDate
101	Pen	102	2011-12-12
102	Pencil	201	2013-02-21
103	Eraser	90	2011-09-09
109	Sharpener	90	2012-08-31
113	Clips	900	2011-09-09

- (d) Shweta wants to delete the records where the "FirstName" is "Rahul" in the „Emp“ Table. She has entered the following SQL statement. An error is being displayed. Rewrite the correct statement. 1
- DELETE „Rahul“ FirstName FROM Emp;

Q2.

- a) Define alternate key with the help of an example. 1
- b) What do you mean by relationship in a table? 2
- c) What do you mean by DBMS? Give examples 1
- d) What is the significance of primary key? 1

Q3. Observe the table 'Player' carefully and answer the following questions:

Player_ID	Player_Name	Player_DOB	Player_Add	Fees	Status
P101	Himanshu	10/05/2000	Delhi	2000	Preparing
P102	Rashmi	12/01/1998	Amritsar	1500	Completed
P103	Shalini	01/02/2001	Chandigarh	1000	Preparing
P104	Shourya	03/03/2000	Agra	2000	Completed

- a. What are the degree and cardinality of a table? 1
- b. Suggest the suitable data type for the Player_ID field. 1
- c. Write a command in SQL to insert a second record in Player table. 1
- d. Write a query to display records whose is having value (Preparing) in Status field. 1

e. Write SQL command to update the record whose address is Agra and change the fees to 1500. 1)

Q. 4. What is the use of Memo and Auto Data type?

Q. 5. What is Degree of a Table?

Q. 6. What is a Cardinality of Relation?

Q. 7. What are two the differences between Number and Date data types?

Q. 8. What are the different types of relations among the tables?

Q. 9. What are the three differences between Alternate and Foreign Keys?

Q. 10. What are the two differences between Candidate and Primary Keys?

Q11. Define RDBMS. Give any two examples of RDBMS.

Q.12. Study the following-data and answer the questions given below :

Table: BOOK_INVENTORY

TITLE_ID	TITLE	AUTHOR	PUB_YEAR	MRP
2310201201	Revolution 2020	Chetan Bhagat	2011	140.00
2410201202	The Facebook Effect	D. Kirkpatrick	2010	399.00
2110201203	The Grand Design	S Hawking	2010	499.00
2110201204	Wine	Collin Gem	2009	320.00

Table: BOOK_SALES

TITLE_ID	ISBN_NO	SALE_DATE	DIS_PRICE
2310201201	978-81-291-1880-1	23/10/2012	120.00
2310201201	978-81-291-1880-2	24/10/2012	120.00
2110201203	978-81-291-1882-1	21/10/2010	450.00
2410201204	978-81-291-1883-1	12/10/2010	220.00

1. Name the field, which can act as the primary key for the table **BOOK_INVENTORY** and the table **BOOK_SALES** respectively.
2. Name the field, which can act as the foreign key for the table **BOOK_SALES**.
3. What kind of relations can exist between **BOOK_INVENTORY** and **BOOK_SALES**?

SECTION-2 (MULTIMEDIA AND MACROMEDIA FLASH-)

Q. 1. What is a Layer? Give three properties of a Layer.

Q. 2. What are Symbols?

Q.3. What is a Frame? What are Frame Buffer and Frame Rate?

Q.4. What is a Frame Buffer? What FPS?

Q.5. What is Publishing? What are two formats which support movie files?

Q.6. What is a Keyframe? What is the use of Stage?

Q.7. What is Timeline?

Q.8. What is Tweening? Name any two types of Tweening?

Q.9. Explain the steps to create a Tweening(Shape Tweening).

Q. 10. Differentiate between TIFF and MPEG .

Q.11 Differentiate between Motion Tweening and Shape Tweening.

Q.12 Name any two movie file formats.

Q.13 Define layer. Write one advantage of using layers in Flash.

SECTION-3 (WEB DEVELOPMENT -HTML & WEB TECHNOLOGIES(I))

1. Give the full forms of the following Abbreviations:

- XML
- FOSS

2. What is the difference between <TD> and <TH> tag? 1

3. Explain the use of HTML tag to embed an audio clip in HTML file. 1

4. What is the purpose of TYPE attribute within the form's INPUT element? 2

5. What will be the output of the given list: 2

```
<ol start="6" type="i">  
  <li> First  
  <li> Second  
  <li value=2> Third  
  <li type="A"> Fourth
```

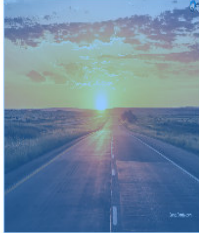
6. Write the HTML code to set the background color as yellow, text color for the whole page should be red, heading 'World No Tobacco Day' should be in center and in Tahoma font. 2

7. Write the HTML code for the given output of the frame document: 2

File1.html	fan.jpg
Flower.jpg	file2.html

OXFORD INTERNATIONAL SCHOOL

Nurturing Every Child's Potential



ADMISSIONS OPEN FOR SESSION 2018-19

The students of the school are prepared for their overall development so that they may face the challenges in this competitive world later on at each step boldly and courageously. The most modern technologies are used in the school while imparting educational instructions to the students so that a permanent impact may be left on their minds.

- I. [VISION AND MISSION](#)
- II. [ADMISSION](#)
 - o PRIMARY WING
 - o JUNIOR WING
 - o SENIOR WING
- III. [EXTRA CURRICULAR ACTIVITIES](#)
- IV. SCHOOL GALLERY

TDI City Kundli, Sector-29
Nagar Road, Jaipur
0141-2787878

For more details : [Contact Us](#)

Following are the specifications for the above webpage:

- a) The title of the webpage is "Half yearly exam".
- b) The background colour is cyan and left margin is 30 pixels.
- c) The link colour of web page is yellow, visited link in green.
- d) The headings "Oxford International School" in Algerian font, center and underlined with top heading level.
- e) Subheading "Nurturing Every Child's Potential" in level 3 with Italics and center aligned
- f) The image used is from the file "sun.jpg".
- g) The size of the text is 5 in the paragraph.
- h) The pages are linked as follows:
 - Vision and Mission with Vision.html
 - Admission with Admission.html
 - Extra curricular activities with activities.html
- i) Use ordered and unordered lists wherever required.
- j) Horizontal rule should be of red color and size is 5.
- k) Contact Us is a mailto link.

SECTION-3 (WEB DEVELOPMENT -HTML & WEB TECHNOLOGIES(II))

Q1. Identify the errors and rewrite the given code :

```
<html>
<body>
<?php
$d = date("D");
Switch ($d)
case "Mon":
echo "Today is Monday";
break;
case "Tue":
echo "Today is Tuesday";
break;
case "Wed":
echo "Today is Wednesday";
break;
case "Thu":
echo "Today is Thursday";
break;
case "Fri":
echo "Today is Friday";
break;
case "Sat":
echo "Today is Saturday";
break;
case "Sun":
echo "Today is Sunday";
break;
default
echo "Wonder which day is this ?";
}
</body>
</html>
```

(b) What is the importance of `_POST` over `_GET` ?

(c) Using PHP, create a text file saved as `C:\xampp\htdocs\test\exam.txt` in which write the four lines of the English poem as written.

*Fisherman in the cold sea
would not harm whales
and the man gathering salt
would not look at his hurt hands*

In the same file write the code to display the number of vowels in this poem. 3

(d) Give the output of the following statements : 3

- (i) `echo strlen("Hello world!");`
- (ii) `echo substr("Hello world!",6);`
- (iii) `echo strcasecmp("Hello", "Hello");`

Q2. (a) What will be the values of the variables `x` and `y` after executing the following code? 1

```
$x=0; $y=0;
for($x=1;$x<=5; ++$x)
```

```
{
$y = $x++;
echo $y;
}
```

(b) What is meant by superglobals in PHP ? Give the names of any two superglobals. 2

(c) Why is it important to close the active connections when their requirement is over ? 1

(d) Following is the code to create a connection to the server and to create a database named myDB in mySql. Fill in the blanks to complete the code : 3

```
<?php
$servername = "localhost";
$username = "username";
$password = "password";
// Create connection
$conn = mysqli_connect(_____, $username, _____);
// Check connection
if _____ {
die("Connection failed:" . mysqli_connect_error());
}
// Create database
$sql = "_____ DATABASE myDB";
if (mysqli_query($conn, _____))
{
echo "Database created successfully";
}
else
{
echo "Error creating database:" . mysqli_error($conn);
}
mysqli_close(_____);
?>
```

(e) Write the PHP code to set a cookie named "user" and value "exam". The cookie should expire after a week. Also display the values stored in _COOKIE. 3

Q3. Identify the errors and rewrite the given code : 2

```
< ?php
$sum=0;
$num=5;
select ($sum) ;
{
case 1:
$num = $num + $sum;
case 2 :
$num = $num + $sum;
else
$sum = $sum/$num;
?>
```

(b) Explain difference between \$_GET and \$_POST variables. 2

(c) Using PHP, create a text file saved as C:\xampp\htdocs\test\exam.txt in which write four line of English poem as written below ; 3

It would be an exotic moment

Without rush, without engines.

We would all be together

in sudden strangeness.

In the same file write the code to display the lines of text that are beginning with "W".

(d) Give output of the following statements :

3

(i) echo(substr("abcdef", -2))

(ii) echo(strcasecmp("Hello", "hello"))

(iii) echo((1 + (3 + 3)) * 2)

Q4. Answer the following questions based on PHP :

(a) What will be the values of variables x and y after executing the following code :

1

```
$a=0; $b=0;
```

```
for ($a = 1;$a<=3; ++$a)
```

```
{
```

```
  $b = $a++;
```

```
  -- $b;
```

```
}
```

(b) Give names of any two Superglobals.

1

(c) Write the output of following code :

2

```
function add(&$var)
```

```
{
```

```
  $var++;
```

```
}
```

```
$a = 1;
```

```
$b = 10;
```

```
add($a);
```

```
echo "a is $a,";
```

```
add($b);
```

```
echo " a is $a, and b is $b";
```

(d) Following is the code to create a connection to server and to create a database named myDB in mySql. Fill in the blanks to complete the following code :

3

```
<?php
```

```
$servername = "localhost";
```

```
$username = "username";
```

```
$password = "password";
```

```
// Create connection
```

```
$conn = mysqli_connect ( _____,
```

```
$username, _____ );
```

```
// Check connection
```

```
if _____ {
```

```
  die("Connection failed: " . mysqli_connect_error ());
```

```
}
```

```
// Create database
```

```
$sql = " _____ DATABASE myDB";
```

```
if (mysqli_query($conn, _____))
```

```
{
```

```
  echo "Database created successfully";
```

```
}
```

```
else
```

```

{
echo "Error creating database: " .
mysqli_error($conn);
}
mysqli_close (_____);
?>

```

(e) Write PHP code to set a cookie named "country" and value "India". The cookie should expire after 2 days. Also display the values stored in \$_COOKIE. 3

Q5.

- a) What is the use of strcasecmp()? 1
- b) What is the difference between Client side scripting and server side scripting? 2
- c) Write the PHP code to read an array of 10 number and then display the sum of odd index position. 2
- d) Write the PHP code to print the factorial of 1 to 10 numbers. 2
- e) What is the difference between PHP file access modes 'w' and 'w+'? 1
- f) What is the output of the given statement: 1

```
$var="Computer";
```

```
var_dump($var);
```

- g) Write a program in PHP to display the following output using calculate button which helps to find the total amount(current balance + Deposit - Withdrawn) where current balance is 50000: 4

HDFC BANK LTD.

ACCOUNT NO:

ACCOUNT HOLDER NAME:

SAVING CURRENT

AMOUNT TO BE WITHDRAWN:

AMOUNT TO BE DEPOSITED:

The total amount in the account is: 70000

Internet | Protected Mode: On

SECTION-3 (WEB DEVELOPMENT -HTML & WEB TECHNOLOGIES(III))

Q1. Write a function using JavaScript that allows two values to be passed to it and calculates the average of those two nos. and returns the result. Use the function to calculate average of 3,5.

Q2. What is the difference between local variable and global variable? 1

Q3. How can we give comments in the javascript? 2

Q4. What will be the value of 'd' after executing the following statements: 1

```
var a=8, b=15, c, d;  
c=a++;  
d=(a++) + (++b) + c;  
document.write(d);
```

Q5. What is the difference between formal parameters and actual parameters in a function? 2

Q6. What is the use of 'isNaN()' function? Give example also. 2

Q7. What is a global variable? 1

Q8. What is the difference between substr() and substring() function? Explain with an example. 2

Q9. Write the output of the following program: 1

```
<Script type="text/javascript">  
var a=0;  
for(var i=1;i<=5;i++)  
{  
    a= a+i;  
}  
document.write("The value of i is " + i + "<br> The value of a is " + a);  
document.write("<br>" + Math.ceil(65.66));  
</script>
```

Q10. Write a JavaScript program using function to pass any number entered by the user and return the sum of the digits of that number and display it. (Ex - 153 = 1+5+3 = 9) 2

Q11. Write the output of the given program: 1

```
var str="Global Warming";  
document.write(str.lastIndexOf('a');
```

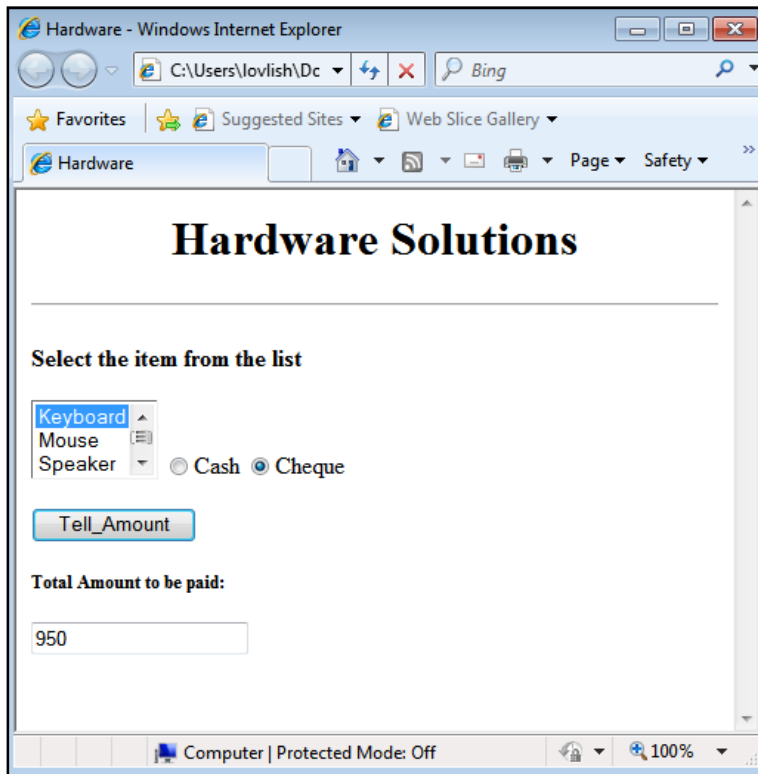
Q12. Rewrite the given program using switch() statement. 2

```
<script type= "text/javascript">
var optn='S';
if (optn=='s' || optn=='S')
{
    document.write(" You have pressed S");
}
else if (optn=='t' || optn=='T')
{
document.write(" You have pressed T");
}
else if (optn=='u' || optn=='U')
{
document.write(" You have pressed U");
}
else
{
document.write(" You have not pressed S, T or U");
}
</script>
```

Q13. Write a program to print the Fibonacci series upto n terms (n should be entered by the user). 2

1, 1, 2, 3, 5, 8 nterms

Q14. Consider the following web page layout: 4



Item list with price (keyboard – 1000, Mouse – 500, Speaker – 1500, UPS – 5000)

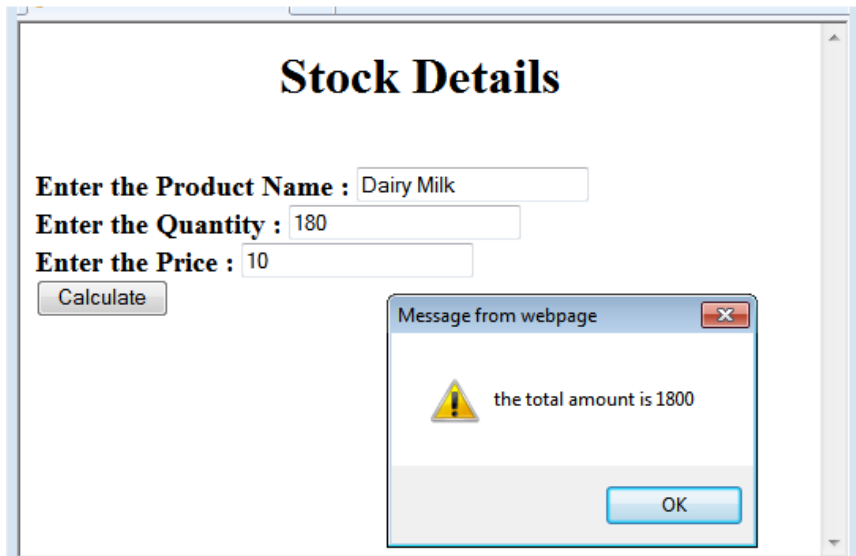
The hardware solutions shop manages the product and the payment mode as:

- The payment mode is either cash or cheque.
- If you choose cash , then you will avail 10% discount on the item
- If you choose cheque, then you will avail 5% discount

Write an interactive HTML program with javascript to calculate the total amount for the item.

Q15. Write a program to display total amount (quantity * price) in alert box as shown in the output given below:

4



SECTION-4 (Networking and Open Standards)

Q1. a) The doctors in the same room have connected their Palm Tops using Bluetooth for exchanging views about a patient. Out of the following **what kind of network** they have formed? 1
LAN, MAN, PAN, WAN

b) Differentiate between **Propriety** and **Open Source Software**. 2

c) Monica is interested in transferring few Songs from her mobile phone to Sangeeta's mobile phone. Suggest two suitable wireless options she may opt for to do the same. 1

d) Give the full form of: 1

(i)FTP

(ii)HTTP

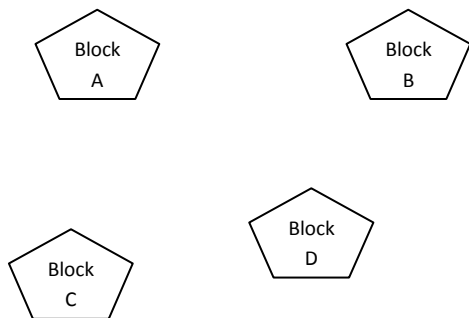
e) Which of the following comes under cyber crime

a) Photocopying a printed report

b) Working on someone's computer with permission

c) Operating someone's Internet Banking Account to withdraw money.

f) The Tangey Flavours Pvt. Ltd has set up its new centre at Karnatka for its office and web based activities, it has 4 blocks of buildings as shown in the diagram below :



The distances between the different blocks are given below :

Block A to Block B 70 m

Block B to Block C 180 m

Block C to Block D 60 m

Block A to Block D 80 m

Block B to Block D 40 m

Block A to Block C 110 m

Number of computers

Block A 35

Block B 60

Block C 140

Block D 1

Answer the following questions based on the above given information :

(i) Suggest suitable cable layout(s) for connecting the blocks.

(ii) Where do you think the server should be placed and explain why ?

(iii) Which of the following communication media , will you suggest to be procured by the company for connecting to a new branch office in New Delhi for very effective and fast communication ?

Ethernet cable

Optical fiber

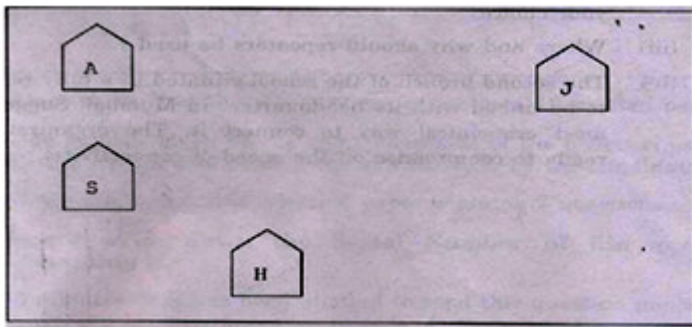
Telephone cable

(iv) Where and why should repeaters and hub/switch be used ?

Q2. Write a short note on following:

- SMS
- Computer Virus
- Malware
- Cyber Law
- Modem
- Information Kiosk

Q3 . MyGrahak, an Indian Commence company wants to open a new regional office at Siliguri and they are setting up the computer network between its offices or wings. There are 4 wings named as SALES(S), LOGISTICS(J), ADMIN(A), and COLDSTORAGE(H).



Distance between various wings are given below:

Wing A to Wing S	100m
Wing A to Wing J	200m
Wing A to Wing H	400m
Wing S to Wing J	300m
Wing S to Wing H	100m
Wing J to Wing H	450m

Number of computers in each wing is as given below:

Wing A	10
Wing S	200
Wing J	100
Wing H	50

Answer the following questions based on the above given information:

1. Suggest suitable cable layout(s) or topology for connecting the wings.
2. Where do you think the server and repeater should be placed and explain why?
3. Suggest the type of cable should be used if the organization wants best and fast networking.